

# SOC

by  
Jean Rolland



# SPECIALIZED OCEANOGRAPHIC CENTRE

**Operated by Meteo France teams and those involved in inter agency programme CORIOLIS**

**Daily collection and archiving of buoys reports**

**Quality Control procedures**

**<http://www.meteo.shom.fr/qctools>**

**Production of monthly products**

**<http://esurfmar.meteo.fr/doc/o/daim>**

# PRODUCTS

**Time evolution of reports for wind and pressure**

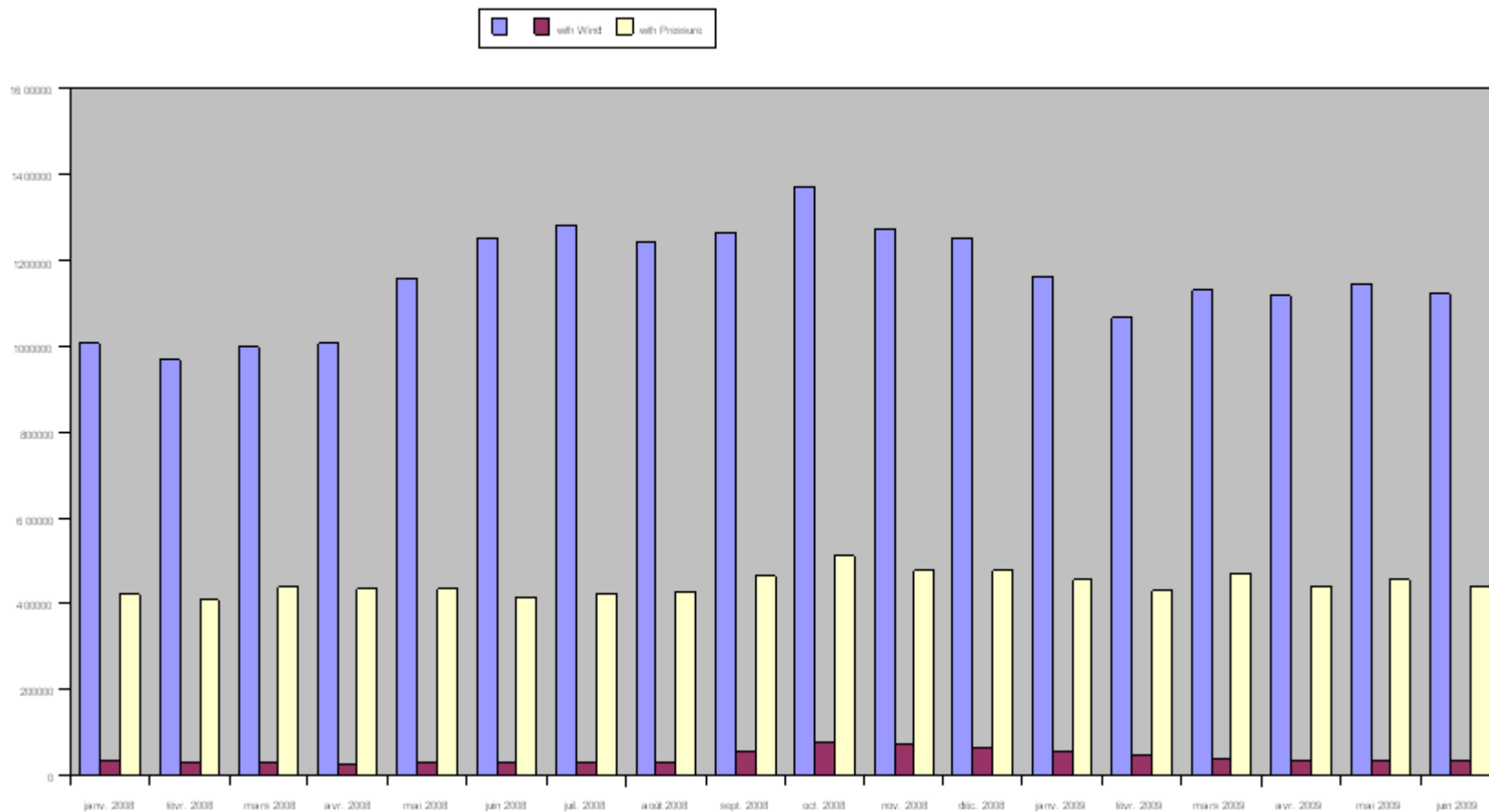
**Time evolution of WAVEOB**

**Mapping position plot charts (bathy, tesac, buoy...)**

**Distribution charts of mean monthly data availability**

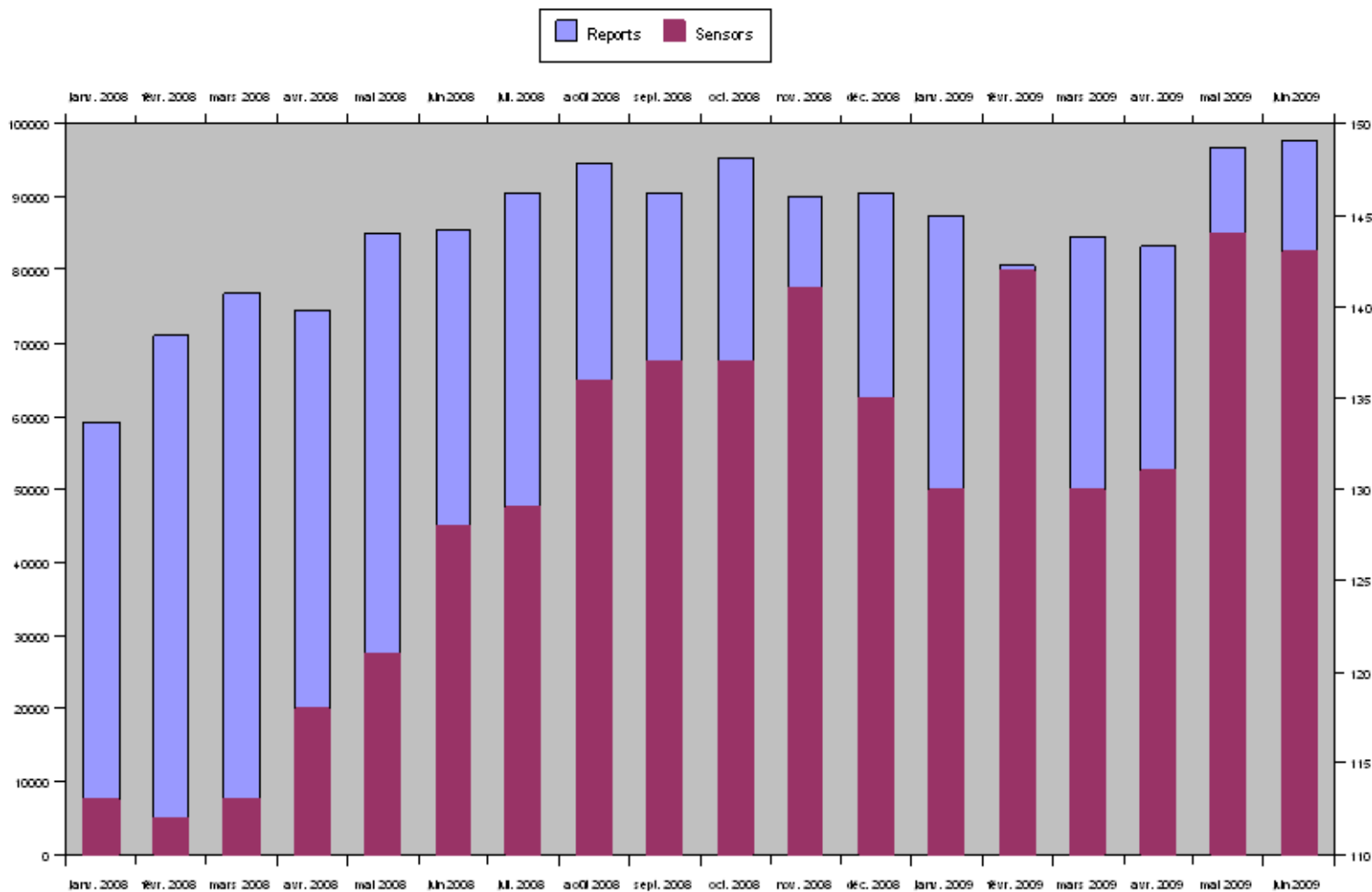
# BUOY reports

Time evolution of BUOY reports for wind and pressure



# WAVEOB reports

Time evolution of WAVEOB reports and sensors



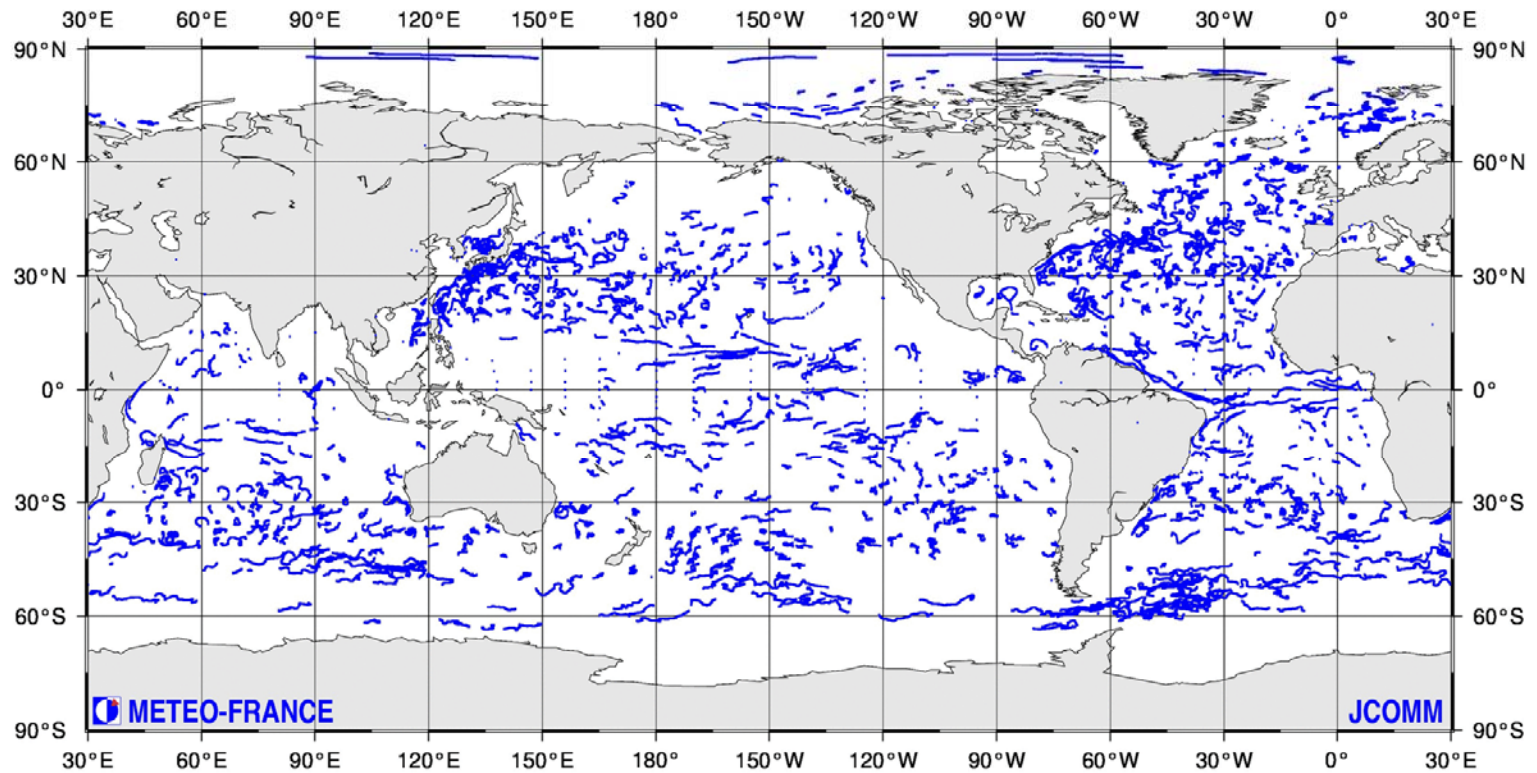
# BUOY Map

Carte de pointage des observations recues en juin 2009

Mapping position plot chart of data received during June 2009

Messages : BUOY

Total : 1119395



# Monthly Products

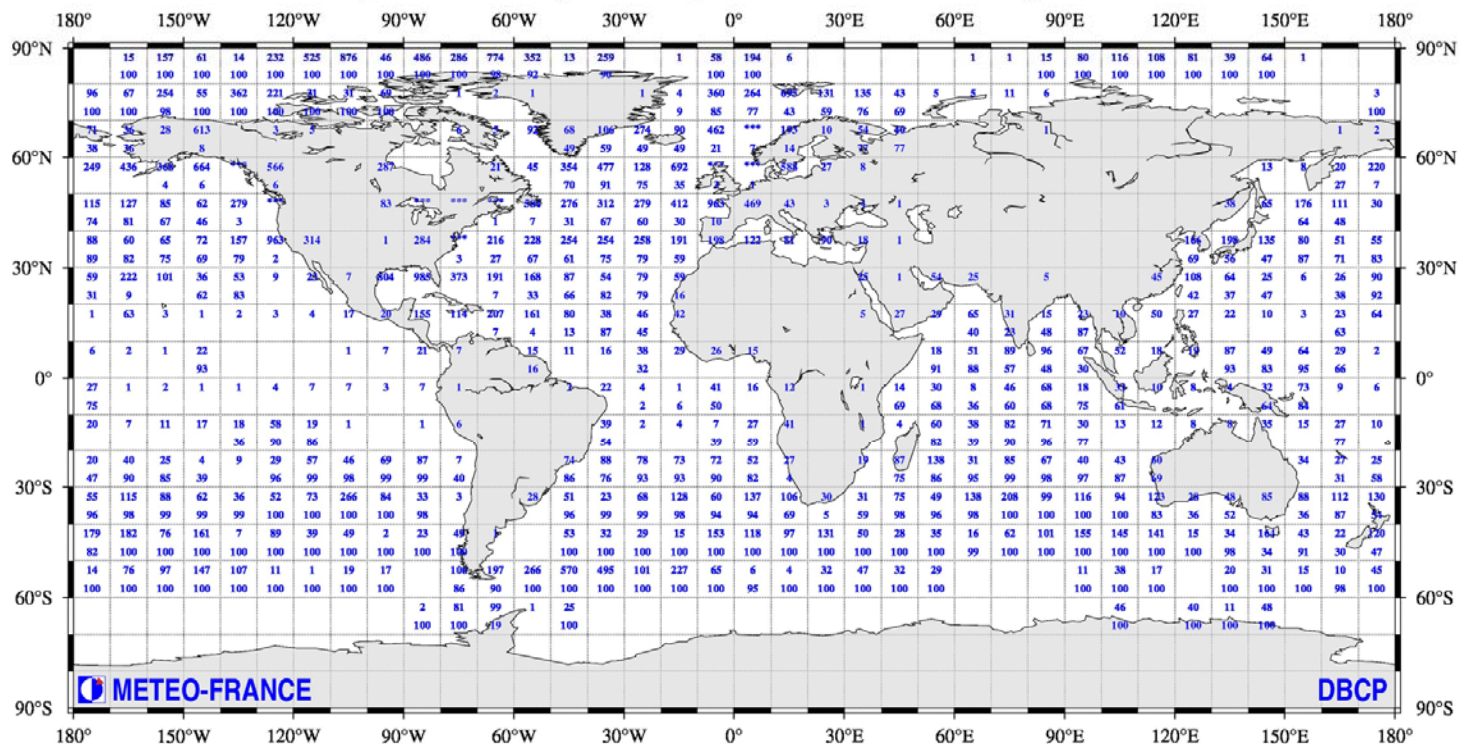
METEO-FRANCE

PRESSURE

JUNE 2009

Marsden square distribution chart of mean monthly data availability index (top)  
(Index 100 = 8 obs. per day per 500km \* 500km area of SHIP and BUOY reports)  
and

Percentage of BUOY reports compared to SHIP+BUOY reports (bottom)



# Monthly Products

	21	45	354	477	128	692	***
			70	91	75	35	3
***	***	584	276	312	279	412	963
	1	7	31	67	60	30	10
***	216	228	254	254	258	191	198
3	27	67	61	75	79	59	
373	191	168	87	54	79	59	
	7	33	66	82	79	16	
114	207	161	80	38	46	42	
	7	4	13	87	45		





**METEO FRANCE**

Toujours un temps d'avance